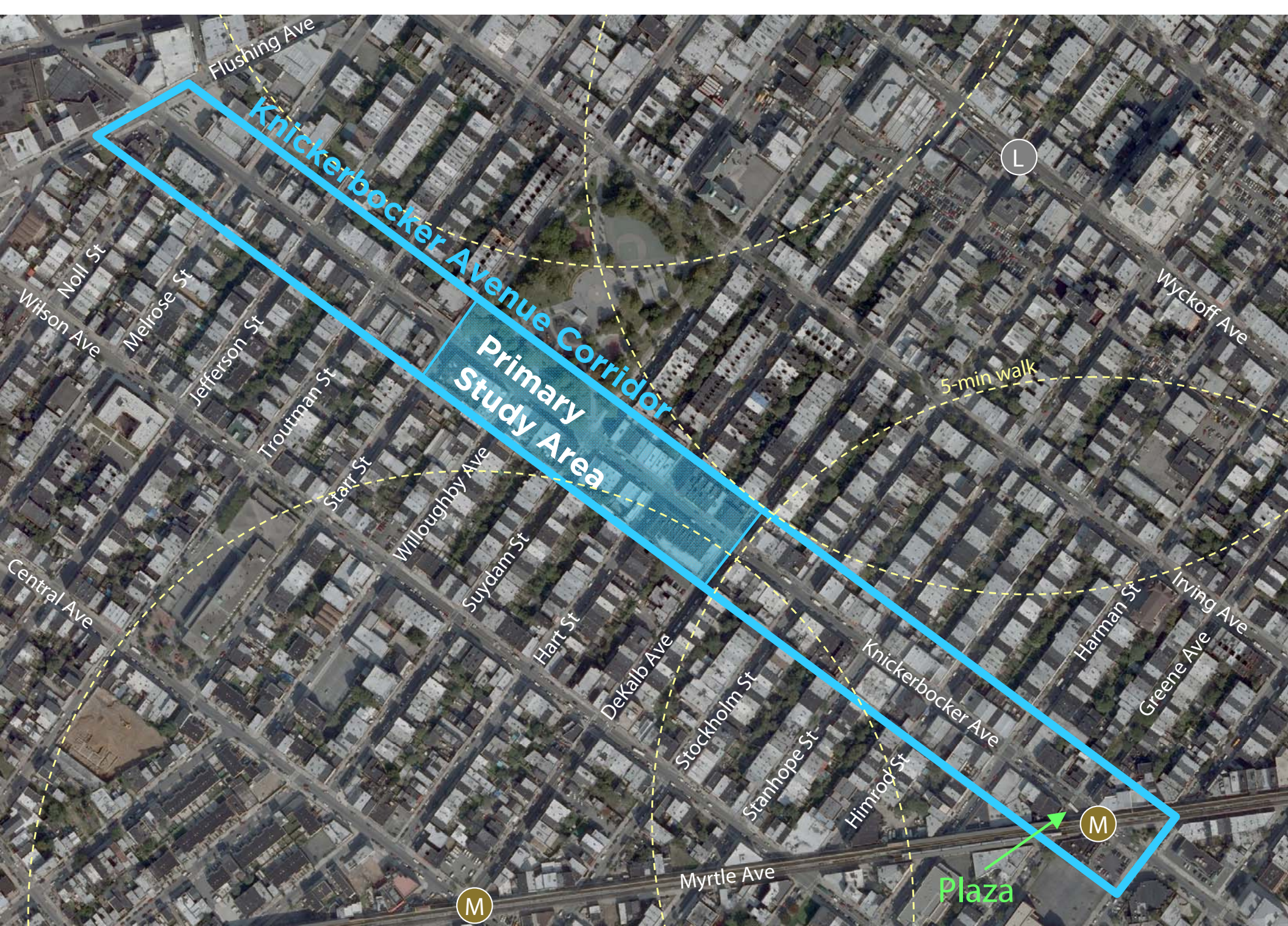




# KNICKERBOCKER AVENUE STREETSCAPE MASTER PLAN

Public Meeting  
June 11, 2010





**STUDY AREA**



- Encourage **economic activity** further north along Knickerbocker Avenue
- Create a **safe, inviting and vibrant public realm** along Knickerbocker Avenue
- Encourage community participation and **on-going stewardship** of Knickerbocker Avenue

- Initial Background Research
- Outreach
  - Pedestrian Surveys
  - Business/Merchant Surveys
  - Public Meeting
- Draft Recommendations
  - Public Meeting
- Final Report





Knickerbocker north of Greene, 1929



KNICKERBOCKER AVE. LOOKING SOUTH FROM STARR ST. AND BUSHWICK PARK, BROOKLYN, N. Y.

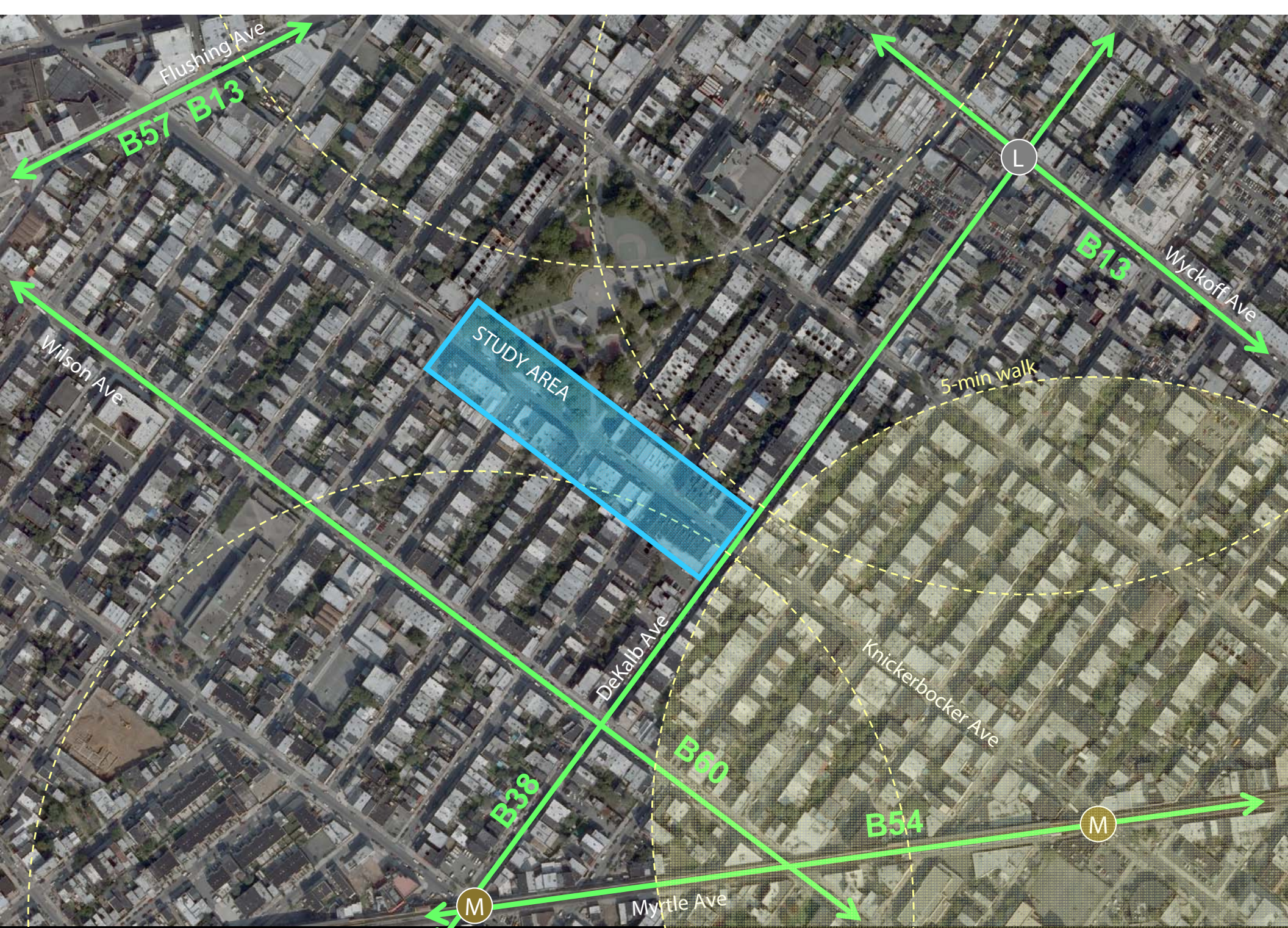


Knickerbocker south from Starr St. and Bushwick Park









**CONNECTIONS** Existing Transit





Anchor Institutions/Landmarks  
(Civic or Commercial)

Anchor Park  
*Prospect Park*

Places to People Watch  
*Union Square*

*Brooklyn Children's Museum*



Specialized Retail

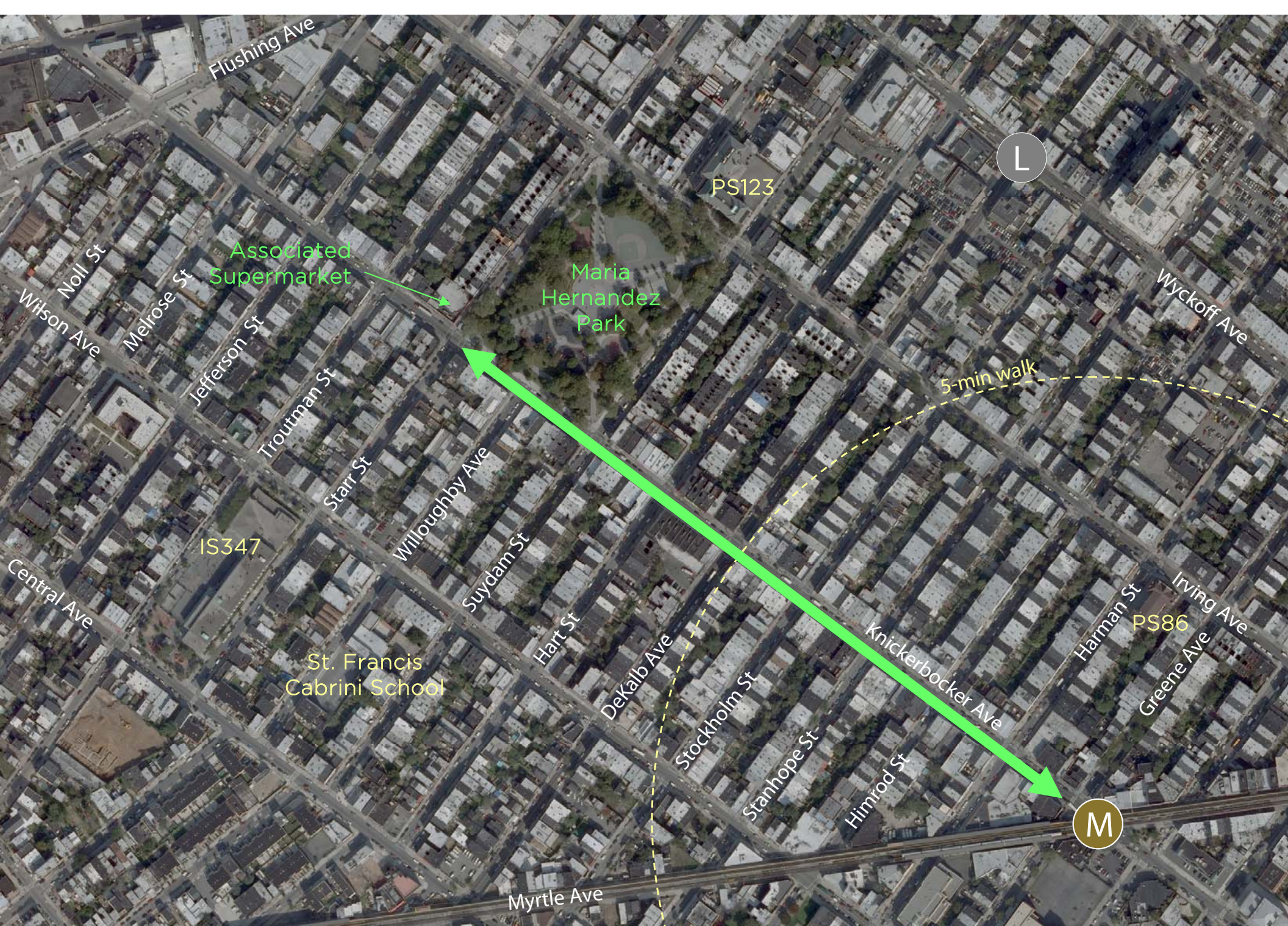
*5th Avenue Restaurant Row/8th Avenue (Sunset Park)*

Night Life

*Sidewalk Café - East Village*

# PLACEMAKING





Flushing Ave

L

PS123

Associated  
Supermarket

Maria  
Hernandez  
Park

Wyckoff Ave

5-min walk

IS347

St. Francis  
Cabrini School

PS86

M

NEIGHBORHOOD "ANCHORS"



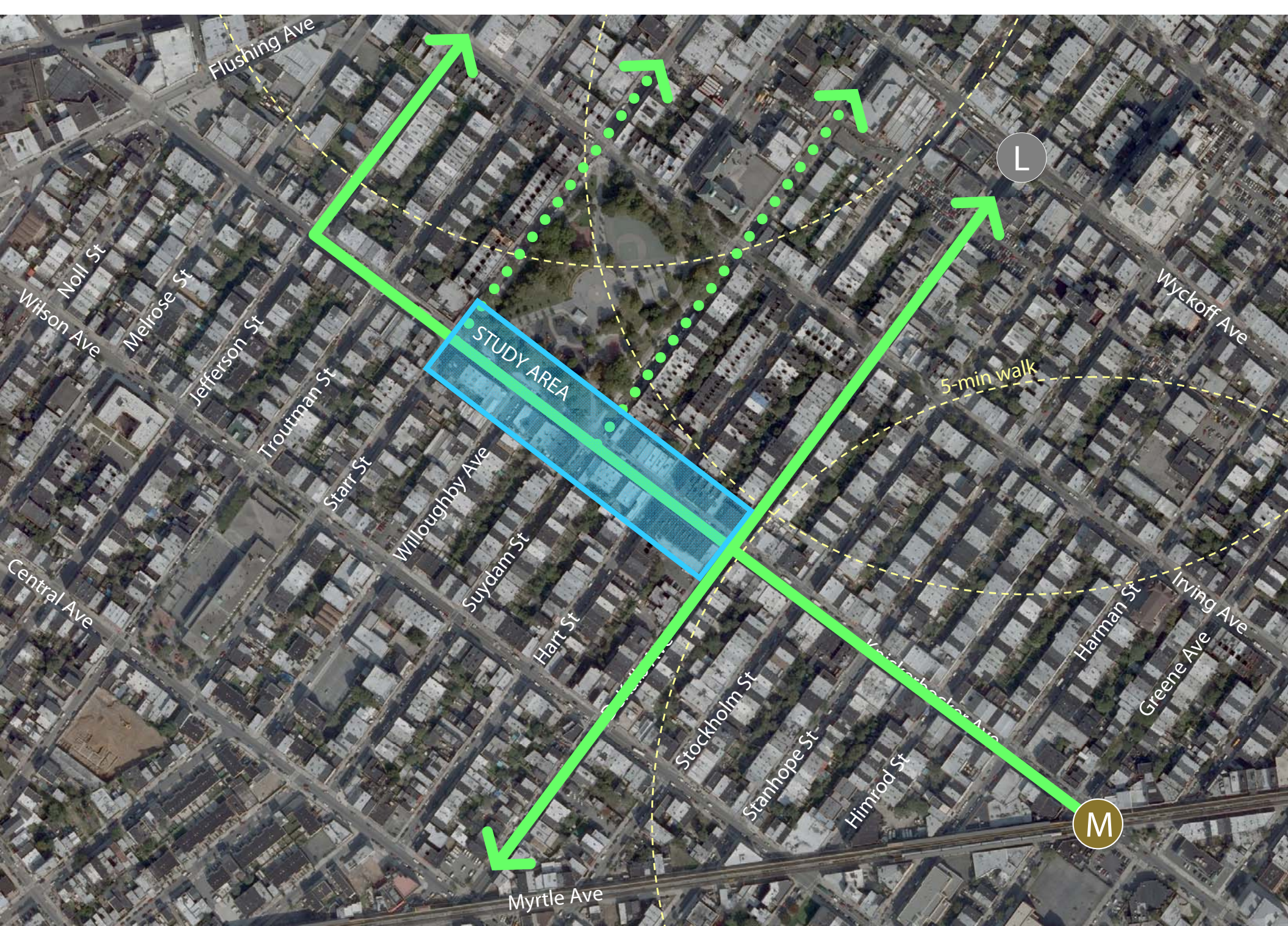


**ANCHORS** Maria Hernandez Park









**CONNECTIONS TO SUBWAYS**





**HISTORIC RESOURCES** Historical Fabric in Parts of Streetscape





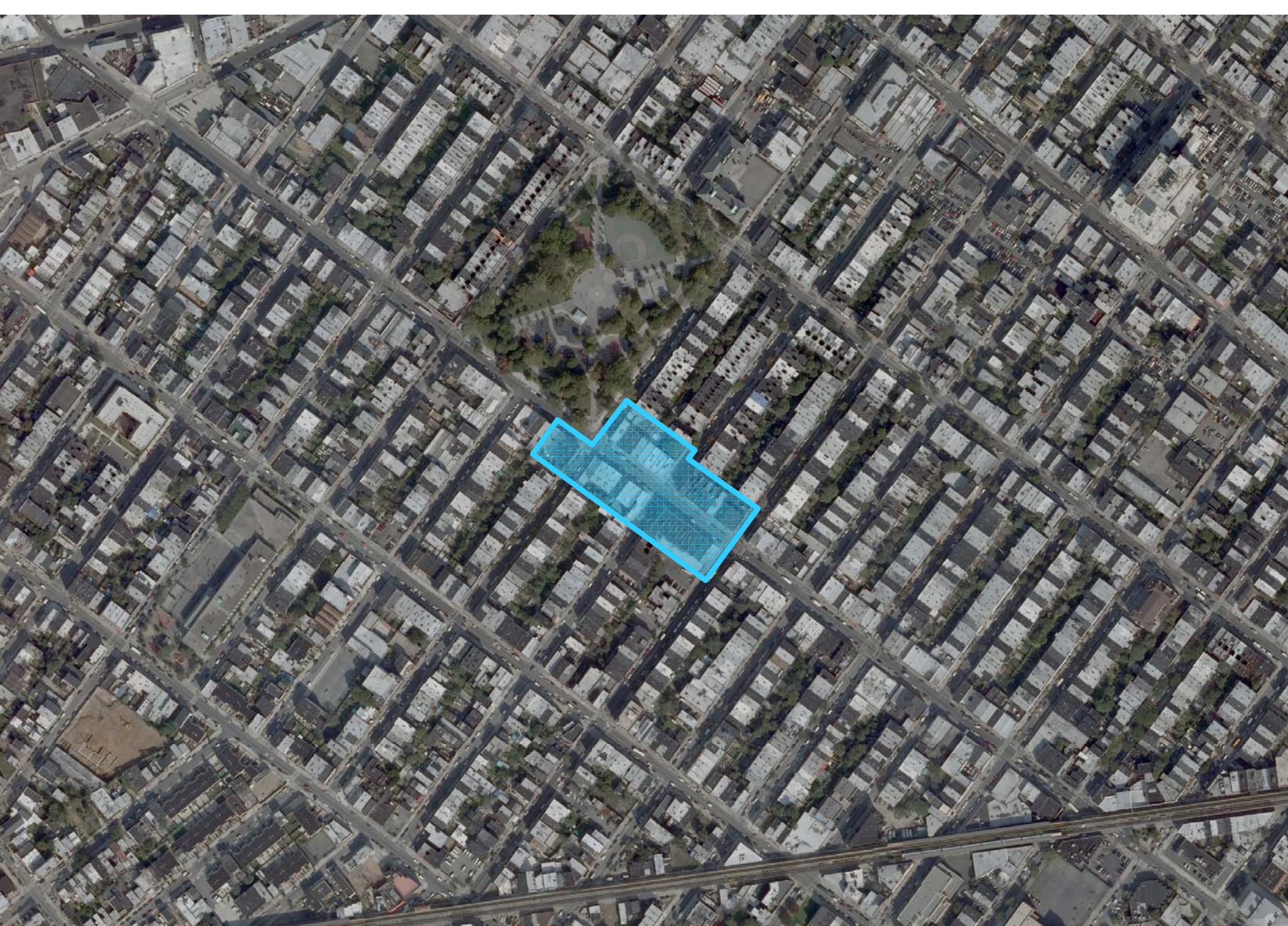
**HISTORIC RESOURCES** Historical Fabric in Parts of Streetscape





**HISTORIC RESOURCES** Historical Fabric in Parts of Streetscape





**HISTORIC RESOURCES** Proposed SHPO Historical District (Preliminary)





**STREETSCAPE ELEMENTS** Limited places to sit and relax





**STREETSCAPE ELEMENTS** New Street Trees along Knickerbocker





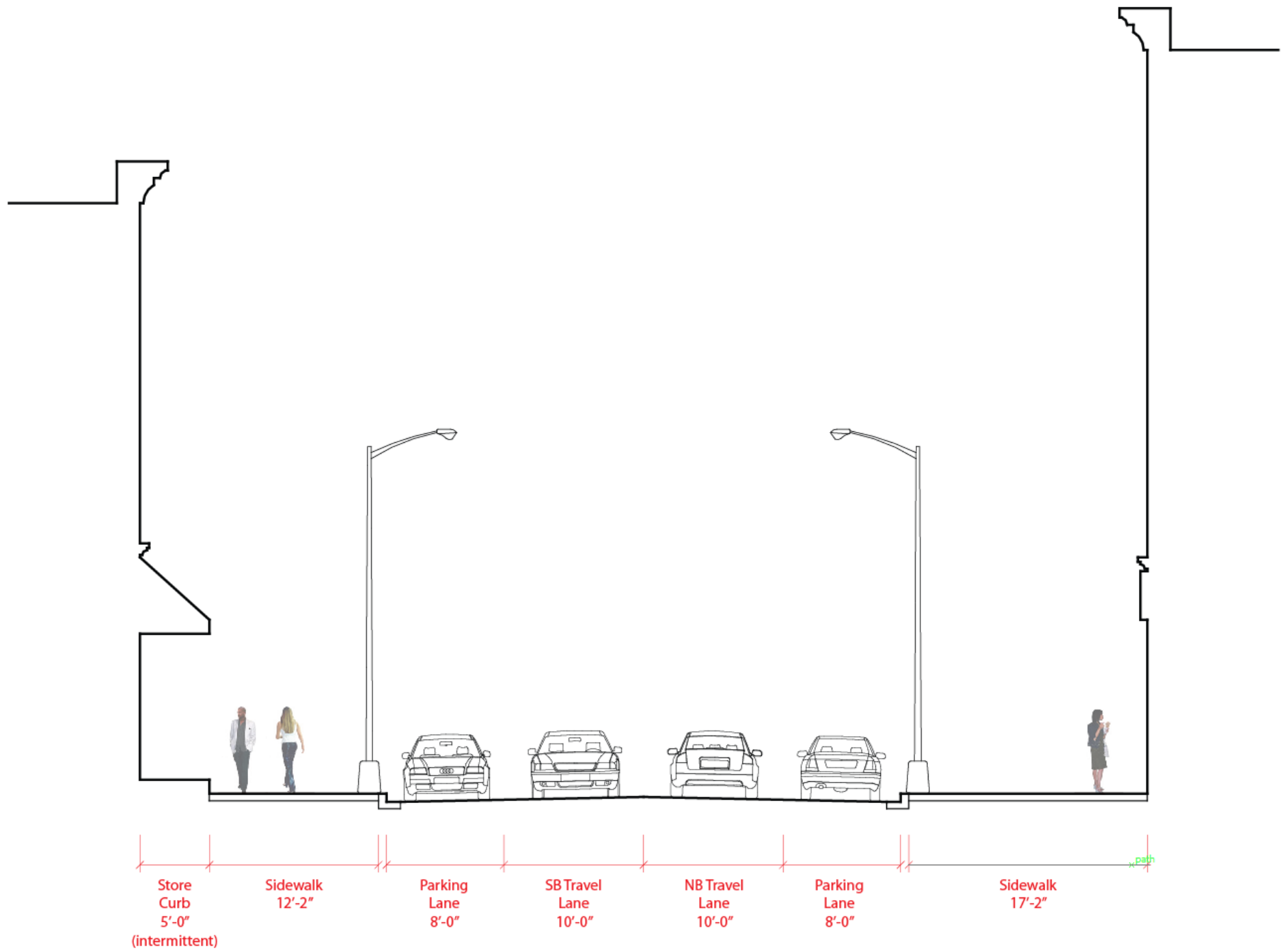
**STREETSCAPE ELEMENTS** Signage and Canopies





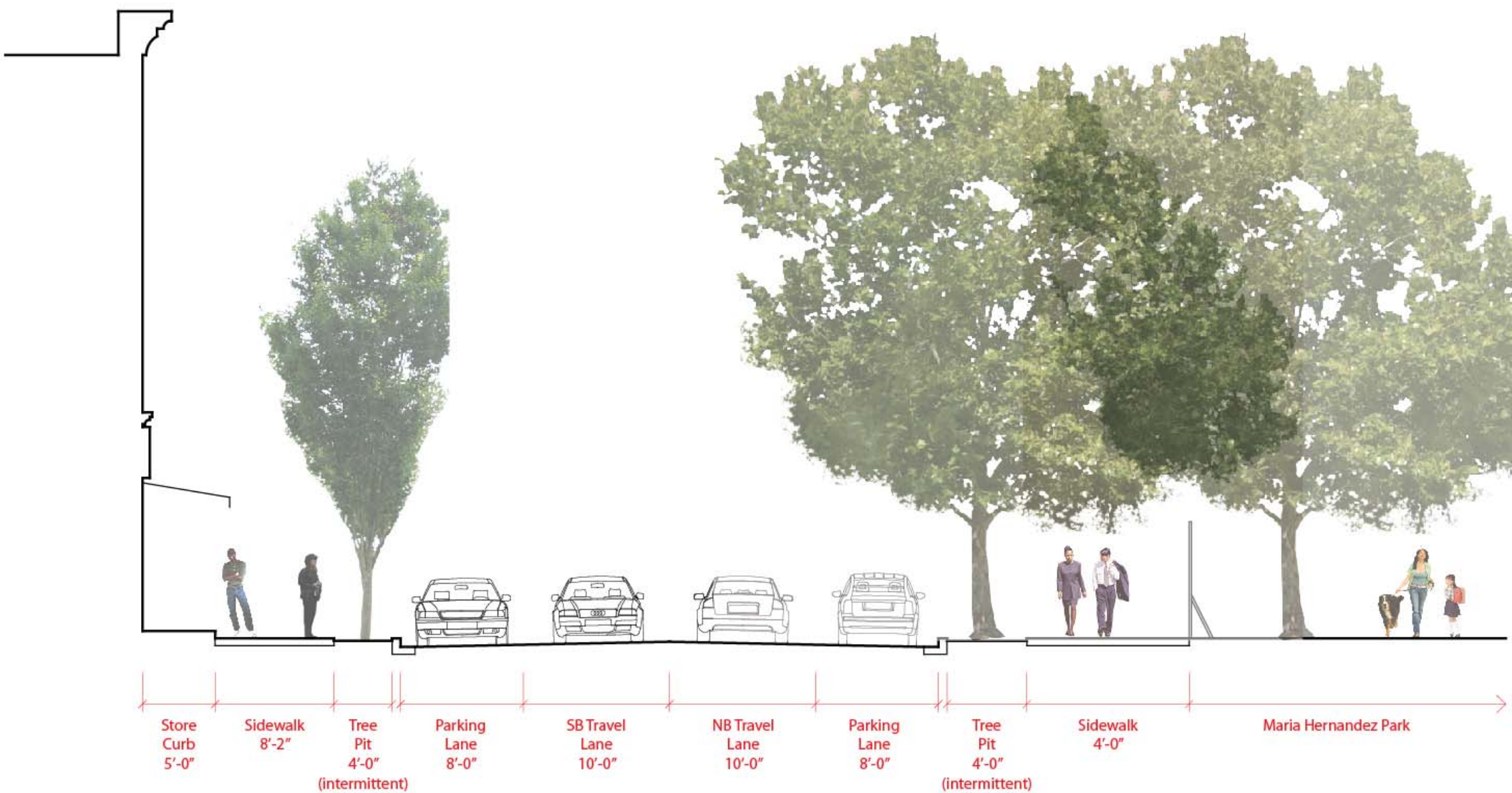
**STREETSCAPE ELEMENTS** Street Vendors





## EXISTING CONDITIONS Typical Street Section





## EXISTING CONDITIONS Street Section at Maria Hernandez Park





**EXISTING CONDITIONS** Paving Deterioration





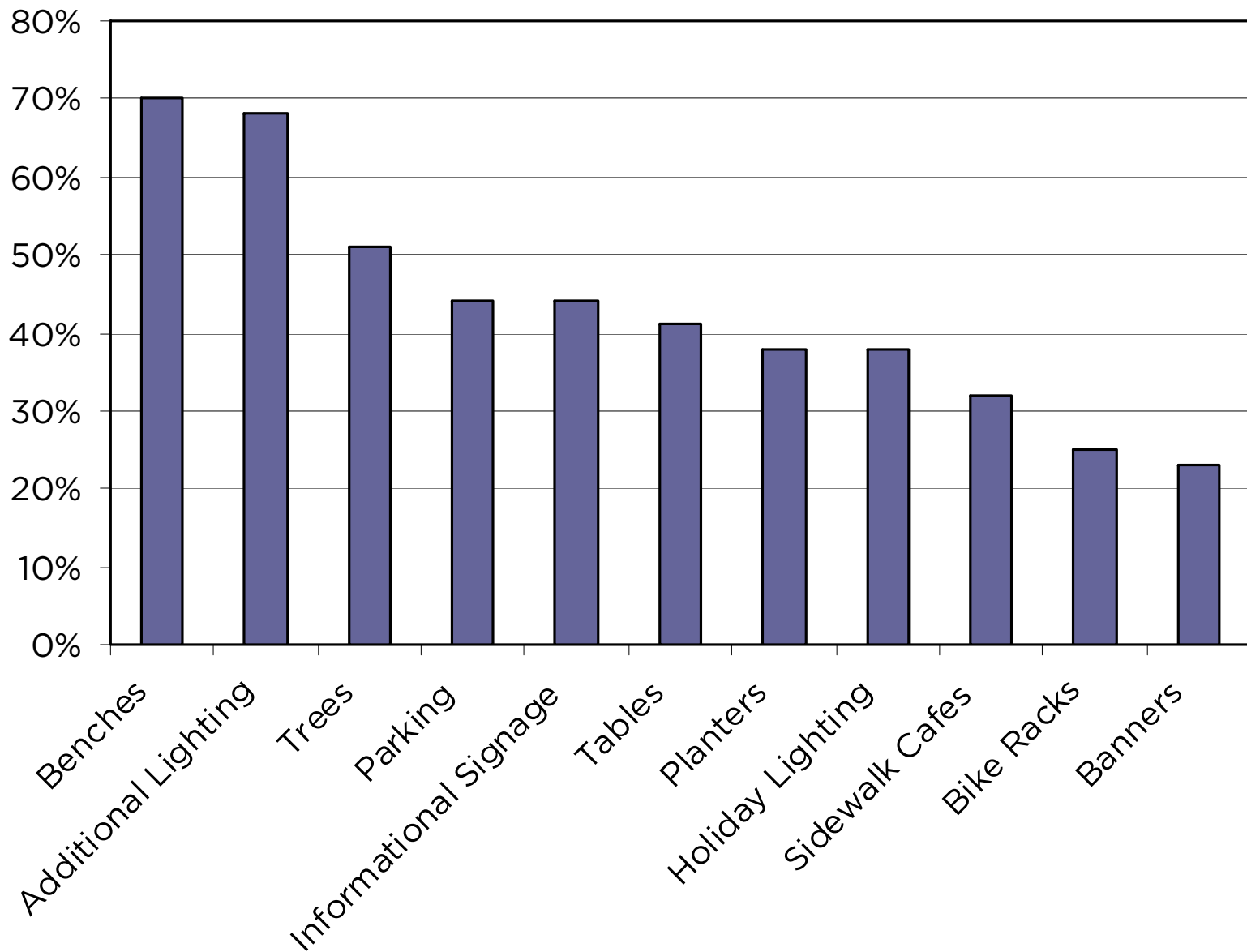
- Good
- Satisfactory
- Poor



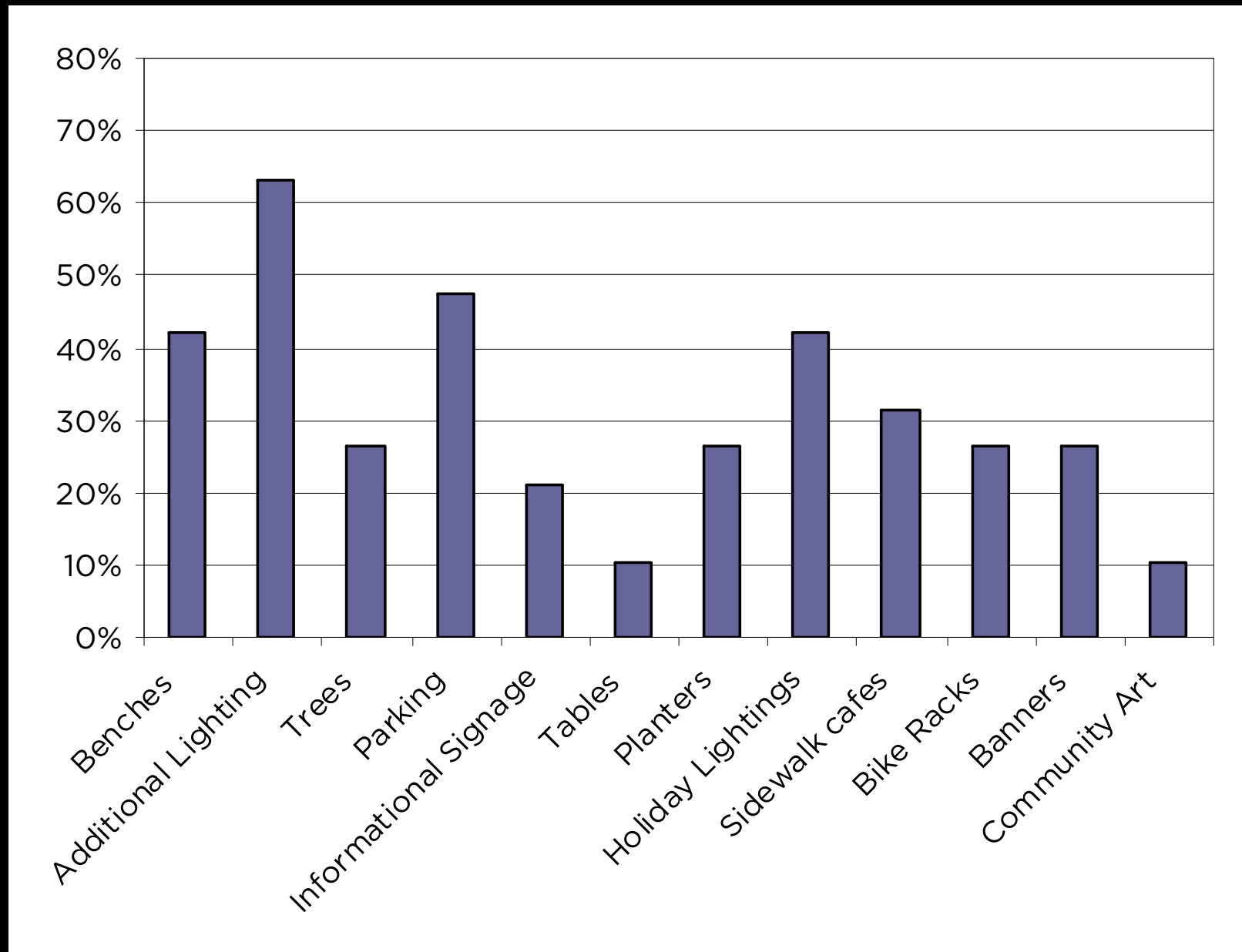
73 pedestrians surveyed

- walked to Knickerbocker Ave.
- are on Knickerbocker Ave. to shop
- think Knickerbocker Ave. is better than 5 years ago, while see no change
- see the street as being safe for pedestrians
- believe that more lighting would make the area safer

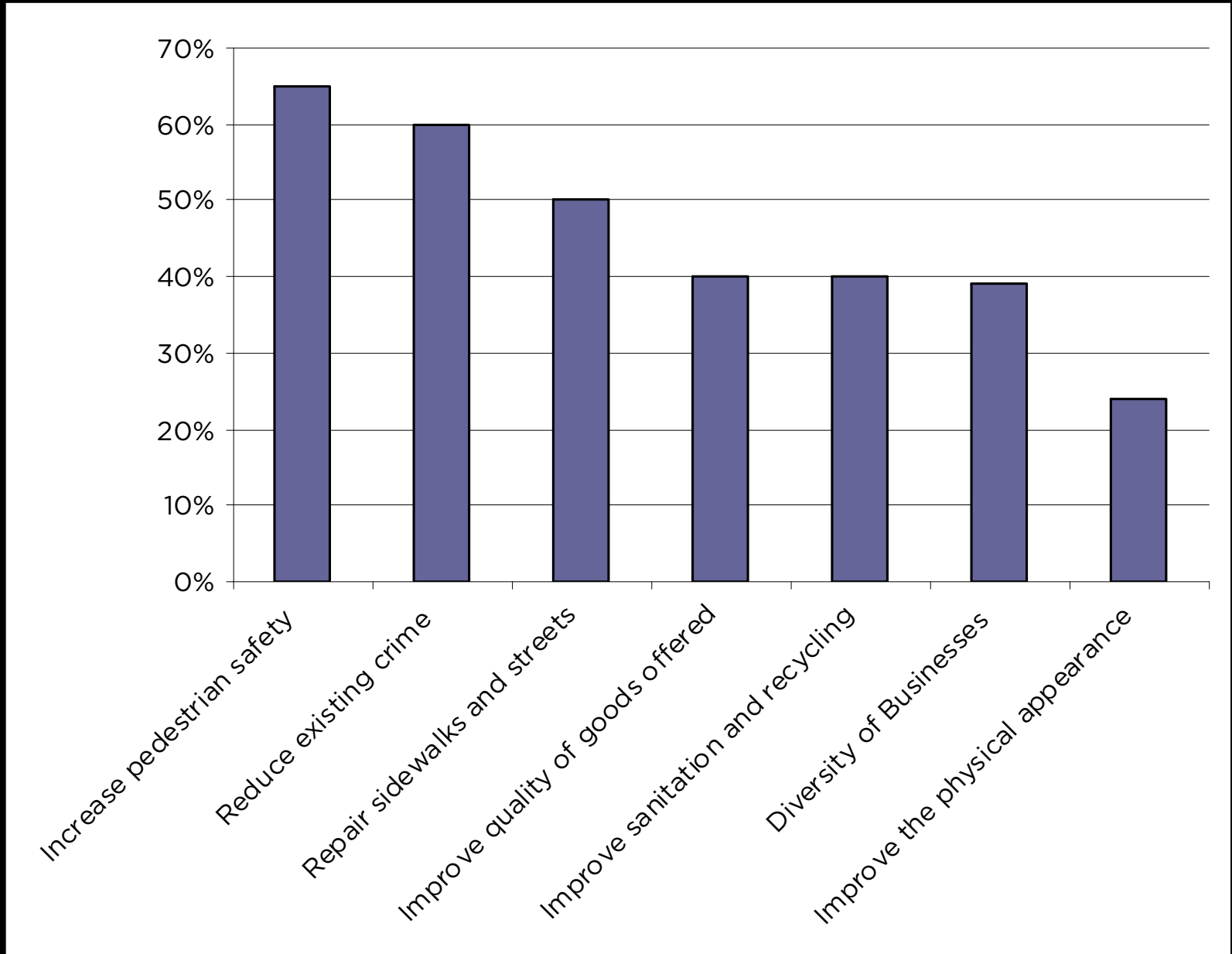




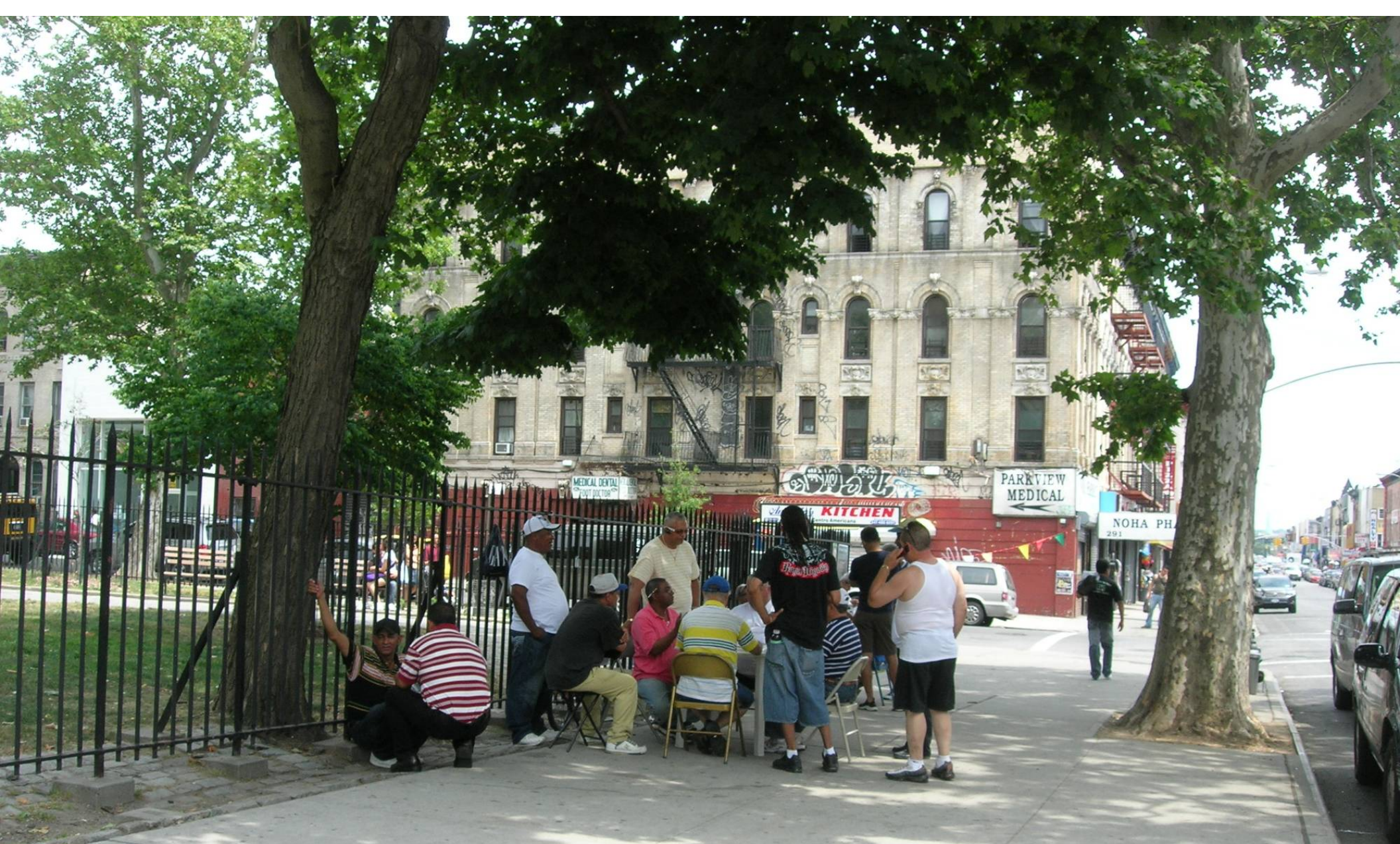












## KNICKERBOCKER AVENUE

### Streetscape Element Possibilities

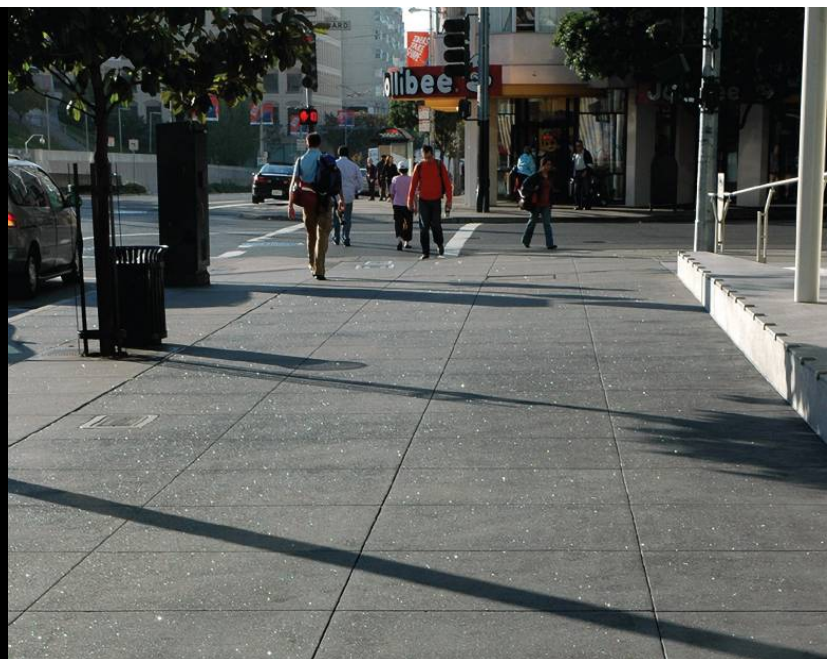




Standard Concrete



Tinted Concrete (commercial areas)



Specular Tinted Concrete



Standard Concrete Curb  
(with steel face)



Granite Curb

**STREETSCAPE ELEMENTS** Sidewalks and Curbs





Standard Pole  
"Cobra Head"

"Helm"

"Flatbush"

"M-Pole"

"Fulton"

"Bishop's Crook"

\$

\$\$\$

\$\$

\$\$\$\$\$

\$\$\$

\$\$\$\$\$





High Visibility Crosswalk



Granite Paver Crosswalk  
*(maintenance agreement)*



Patterned Crosswalk  
*(maintenance agreement)*





Curb Extension: 5<sup>th</sup> Avenue, Brooklyn



Curb Extension with seating and trees: 46<sup>th</sup> Street, Queens



Curb Extension with Green Street: Mulry Square, Manhattan



Curb Extension with Bike Parking: N. 7<sup>th</sup> Street, Brooklyn

**STREETSCAPE ELEMENTS** Curb Extensions





Myrtle Avenue, Ridgewood, Queens

## **STREETSCAPE ELEMENTS** Street Furnishing Zone





Granite Blocks  
*(maintenance agreement)*



Asphalt/Concrete Pavers  
*(maintenance agreement)*

**STREETSCAPE ELEMENTS** Street Furnishing Zone





Connected Tree Pits  
Red Hook



Community Plantings  
Fort Greene



Trees and Community Plantings  
Myrtle Avenue, Queens

**STREETSCAPE ELEMENTS** Trees and Plantings



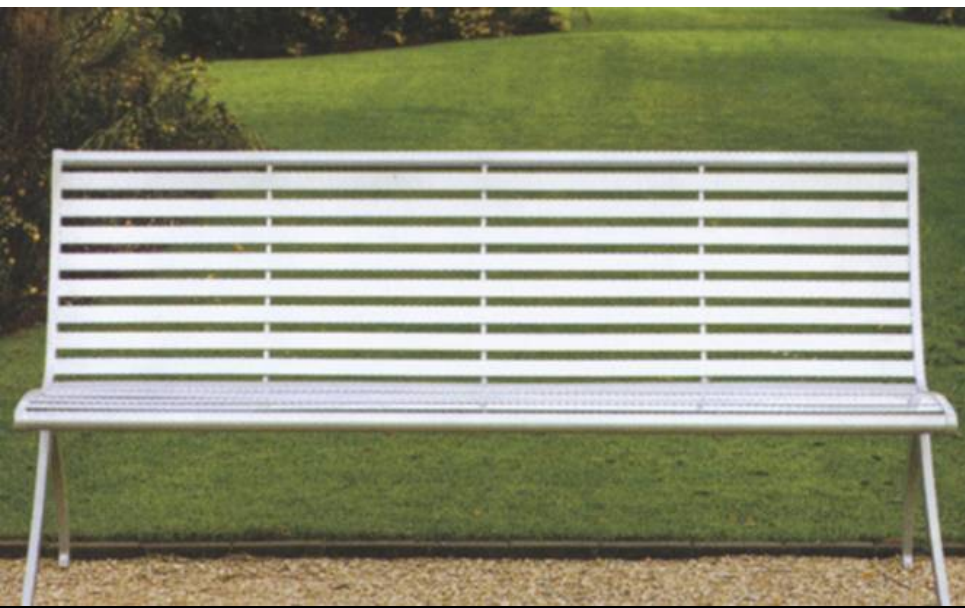


Callery Pear *Pyrus Calleriana* 'Cleveland Select'  
5<sup>TH</sup> Avenue, Brooklyn



Ginkgo *Ginkgo biloba*  
Court Street, Brooklyn





Parc Vue



1939 World's Fair



Hoof Bench



River Bench





DOT Standard Rack



Bike Shelter

**STREETSCAPE ELEMENTS** Bike Parking





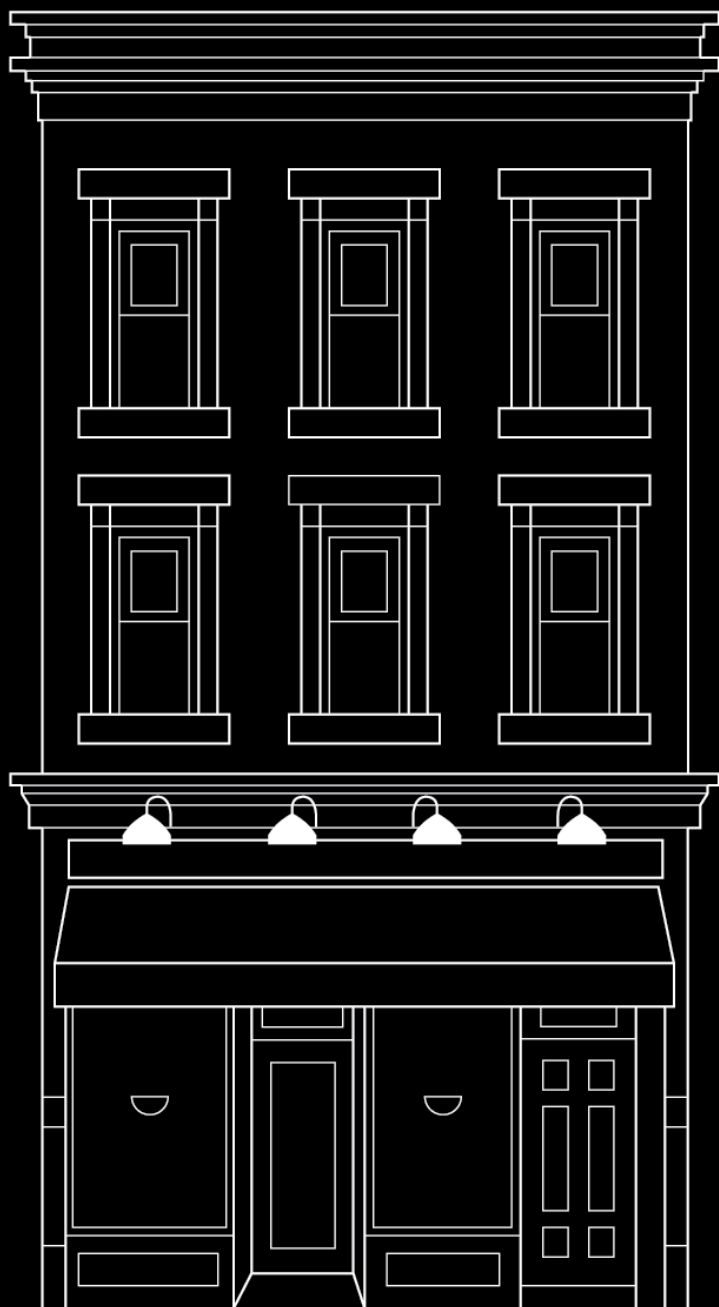
Parking Meter  
Knickerbocker Avenue



Muni Meter

**STREETSCAPE ELEMENTS** Temporary On-Street Parking



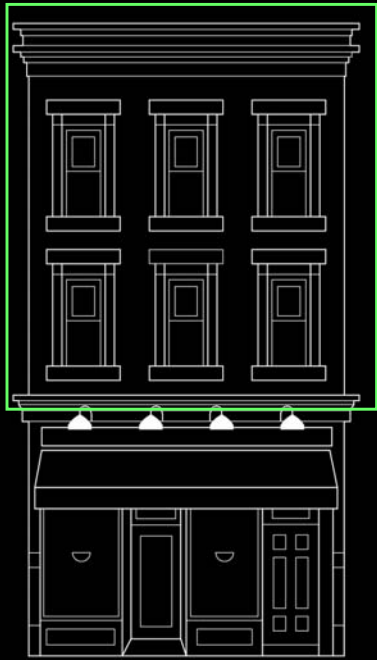


## New York Main Street Program

### SHPO Historic District

- Provide funds or tax breaks for commercial façade improvements
- Require case-by-case review of intended renovations
- Design Guidelines can help merchants and property owners make decisions

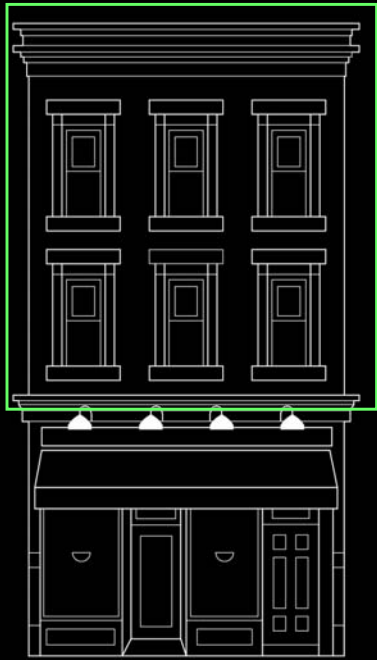




Knickerbocker at Hart

## STOREFRONT FACADES Upper Stories

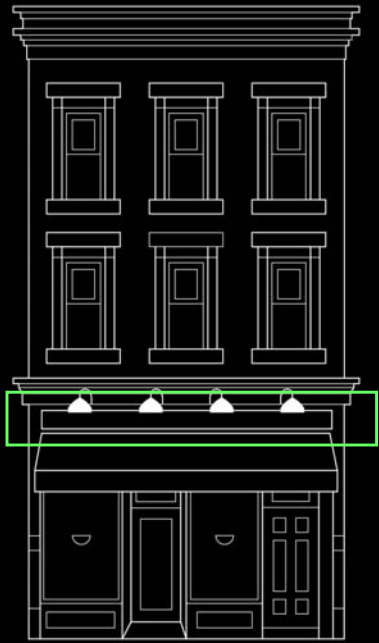




Jamaica, Queens

## STOREFRONT FACADES Upper Stories

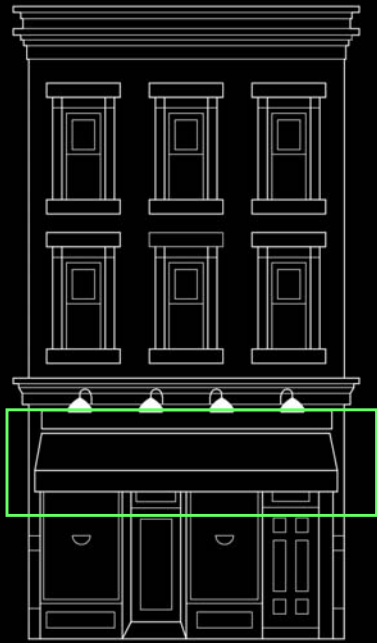




7th Avenue and Berkeley Place, Brooklyn

## STOREFRONT FACADES Signage





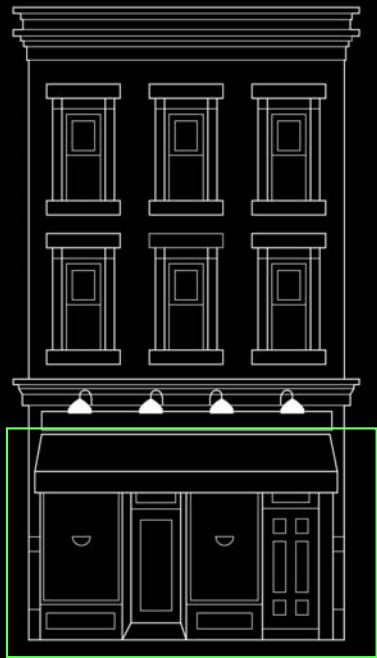
Before



After

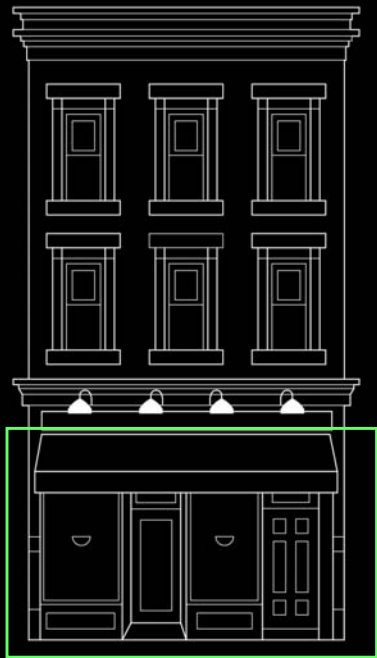
Myrtle Avenue, Brooklyn





Knickerbocker at Suydam





Atlantic Avenue, Brooklyn

## STOREFRONT FACADES Open Grid Grilles





Morningside Heights



Harlem



Fort Greene

**PROGRAMMING THE PUBLIC SPACE** Sidewalk Cafés





Knickerbocker at Woodbine



Knickerbocker at Harrison Place





Knickerbocker Avenue



Fordham Road



North Flatbush



Flushing

**PROGRAMMING THE PUBLIC SPACE** Banners, Special Lighting





Bushwick Farmers' Market



Bushwick Open Studios



Sunday Scene on Knickerbocker



**PROGRAMMING THE PUBLIC SPACE** Community Events





Special Trash Cans, Clean Streets  
Jamaica Avenue, Queens



Doe Fund  
Knickerbocker and Harman

**PROGRAMMING THE PUBLIC SPACE** Maintenance



1. What are the things about Knickerbocker Avenue which make it **special and unique from other areas**?
2. Which ideas could you implement **immediately and at low-cost** to improve Knickerbocker Avenue?
3. Which potential **long-term physical changes** to Knickerbocker Avenue can you identify that would have the biggest impact in improving Knickerbocker Avenue?
4. What **local partnerships** can you identify that could help implement some of your proposed improvements?